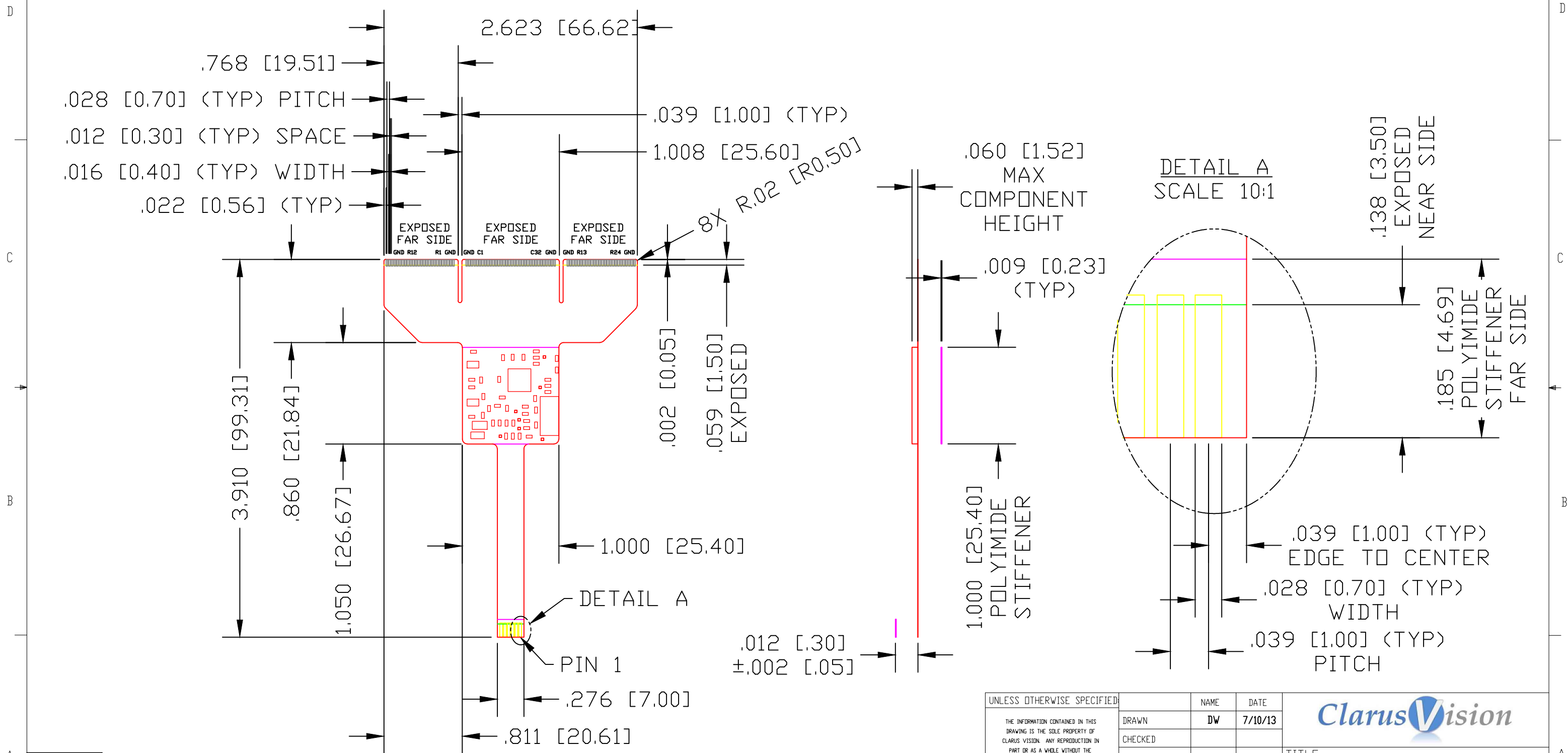


REVISIONS			
REV.	DESCRIPTION	DATE	APPROVED
1	RELEASED	7/10/13	DW



PINOUT	
1	GND
2	D+/SCL
3	D-/SDA
4	VIN
5	NC
6	INT

UNLESS OTHERWISE SPECIFIED: THE INFORMATION CONTAINED IN THIS DRAWING IS THE SOLE PROPERTY OF CLARUS VISION. ANY REPRODUCTION IN PART OR AS A WHOLE WITHOUT THE WRITTEN PERMISSION OF CLARUS VISION IS PROHIBITED.	DRAWN	NAME	DATE	
	CHECKED	DW	7/10/13	
	ENG APPR.			
MATERIAL	PROPRIETARY AND CONFIDENTIAL DIMENSIONS ARE IN INCHES TOLERANCES: FRACTIONAL ±1/64 ANGULAR: MACH ±1° BEND ±1° TWO PLACE DECIMAL ±.020 THREE PLACE DECIMAL ±.015 FOUR PLACE DECIMAL ±.010 FIVE PLACE DECIMAL ±.005			TITLE:
FINISH	DO NOT SCALE DRAWING			7" TO 10.1" COF TAIL FOR TWO F/G
	SIZE	DWG. NO.	REV	
	B	PC-000045	01	
	SCALE: 1:1	WEIGHT:	SHEET 1 OF 1	