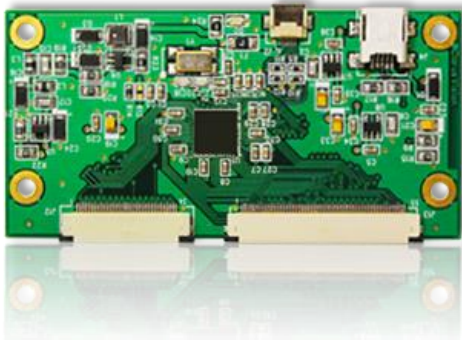


CX-1500

Touch Screen Controller



Features:

- Supports Screen Sizes of 10.1" – 15.6" (diagonal inch)
- Multi-Touch Input, 10-point simultaneous
- Rapid Touch Response, 16 ms standard
- Low Power Consumption, 25mA Standby State
- Compatible with Glass and Film Sensors, ITO and Mesh
- Advanced Signal Processing for Noise Reduction (EMI) and Calibration.
- Interface Options, USB/I2C/Serial
- No Drivers or Calibration Required
- Available in Rigid PCB Type or COF (Chip-on-Flex) Type

Revision 1.0 Overview

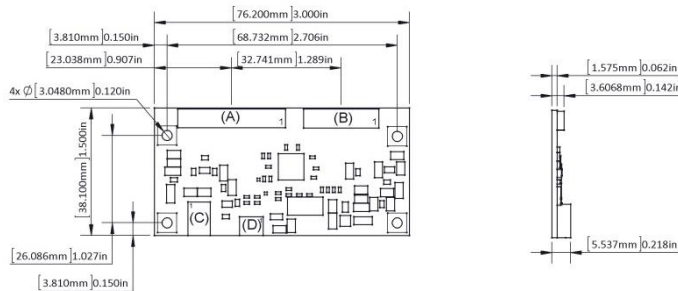
The Clarus Vision CX-1500 controller is built for stability and reliability in mid-size range touch screen applications. These applications include notebook computers, large tablets, control panels, and information kiosks. Multiple I/O configurations of the CX-1500 controller enable system integrators to build into front panel designs or internally connect via USB or I²C interfaces. Configurable firmware options and tuning provide optimum performance and reliability for demanding applications.

Clarus Vision, LLC.
12345 North Lamar Blvd. Ste. 135, Austin, TX, 78753
sales@Clarus-Vision.com www.Clarus-Vision.com 1-512-835-1234

CX-1500 Touch Screen Controller Specification

Mechanical

Screen Size	10.1" – 15.6" (diagonal inch)
Panel Type	ITO or Metal Mesh Type Sensors, Up to 6 mm panel thickness (Glass/ Film)
Construction	Rigid FR4 PCB, or COF PCB
Dimensions	76.20 mm x 38.10 mm x 5.54 mm *Note: COF controller type not shown due to design flexibility.
Connectors	(A) Flexible Tail Connector (55-pin, 0.5 mm pitch, double-sided contact), (B) Flexible Tail Connector (34-pin, 0.5 mm pitch, double-sided contact), (C) USB-Mini Connector, (D) I ² C Connector,



Electrical

Technology	Projected Capacitive Multi-Touch, up to 10-points (simultaneous)
Input Method	Finger, Glove, Passive Stylus
Linear Accuracy	< ± 1.0% (x/y direction)
Touch Resolution	4096 x 4096 (size independent)
Response Time	16 ms (standard), 8 ms (maximum)
Scan Rate	125 Hz, 150 Hz maximum (single touch)
Operating Current	115mA (with active touch), 25mA (idle state)
Power	+5V DC Input, Internal +10V DC
EMI Compliance	*Current design not tested, but can be tuned to pass standard compliance testing.
Communication	USB 2.0, I ² C 400Hz, USB-HID (Windows 7/8) 12-bit data transfer
Software	No touch calibration required. No software drivers required. (USB-HID) EMI and noise filtering through firmware. Custom drivers and protocol development available.

Environmental

Temperature	Operating: -25 °C – 70 °C Storage: -40 °C – 85 °C
Humidity	Operating: No condensing at 90% RH at 60 °C Storage: Non-condensing at 90% RH at 25 °C
ESD	*Current design not tested, but can be tuned to pass standard compliance testing.

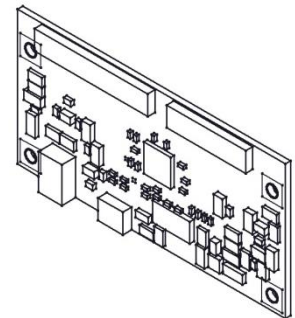
Reliability

Touch Lifetime	More than 1 million touches.
Warranty	Standard 1 year limited warranty, optional extended warranty.

Projected Capacitive Touch System CV-SERIES

CX-1500

Touch Screen Controller



Contact Us:

Clarus Vision, LLC.
12345 North Lamar Blvd. Ste. 135, Austin, TX, 78753
sales@Clarus-Vision.com www.Clarus-Vision.com 1-512-835-1234