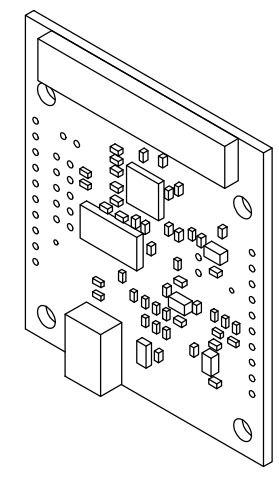
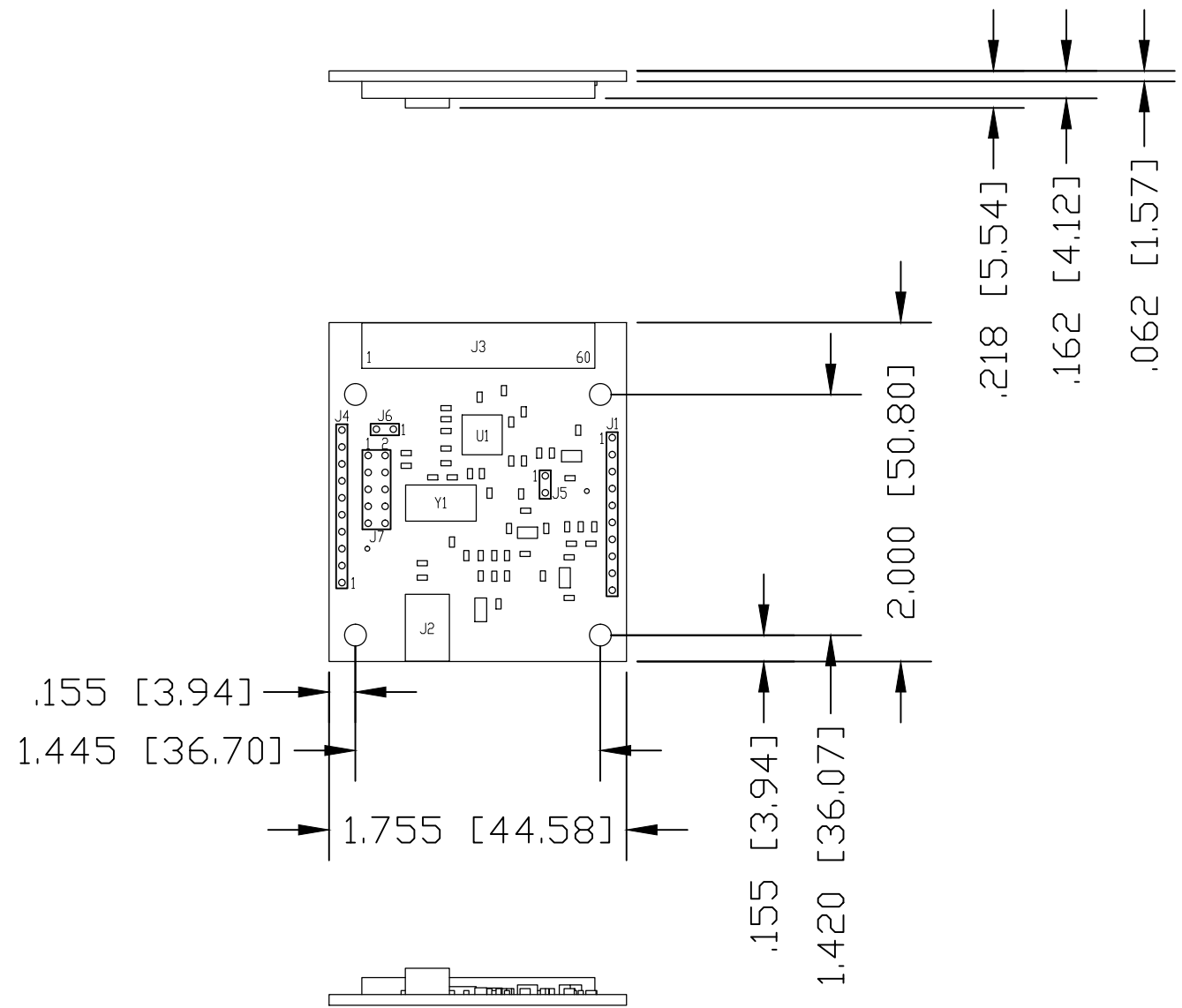


REVISIONS			
REV.	DESCRIPTION	DATE	APPROVED
1	RELEASED	10/18/12	DW

J3 PINOUT			
1	GND	31	Y16
2	X23	32	Y17
3	X22	33	Y18
4	X21	34	Y19
5	X20	35	Y20
6	X19	36	Y21
7	X18	37	Y22
8	X17	38	Y23
9	X16	39	Y24
10	X15	40	Y25
11	X14	41	Y26
12	X13	42	Y27
13	X12	43	Y28
14	GND	44	Y29
15	Y0	45	Y30
16	Y1	46	Y31
17	Y2	47	GND
18	Y3	48	X0
19	Y4	49	X1
20	Y5	50	X2
21	Y6	51	X3
22	Y7	52	X4
23	Y8Y	53	X5
24	9	54	X6
25	Y10	55	X7
26	Y11	56	X8
27	Y12	57	X9
28	Y13	58	X10
29	Y14	59	X11
30	Y15	60	GND



J2 PINOUT	
1	F1
2	D-
3	D+
4	N/C
5	GND

UNLESS OTHERWISE SPECIFIED: THE INFORMATION CONTAINED IN THIS DRAWING IS THE SOLE PROPERTY OF CLARUS VISION. ANY REPRODUCTION IN PART OR AS A WHOLE WITHOUT THE WRITTEN PERMISSION OF CLARUS VISION IS PROHIBITED.	DRAWN	NAME	DATE	
	CHECKED	DW	10/18/12	
	ENG APPR.			
MATERIAL	PROPRIETARY AND CONFIDENTIAL DIMENSIONS ARE IN INCHES TOLERANCES: FRACTIONAL ±1/64 ANGULAR: MACH ±1° BEND ±1° TWO PLACE DECIMAL ±.020 THREE PLACE DECIMAL ±.015 FOUR PLACE DECIMAL ±.010 FIVE PLACE DECIMAL ±.005			TITLE:
FINISH	DO NOT SCALE DRAWING			7" TO 10.1" TOUCH CONTROLLER
	SIZE	DWG. NO.	REV	
	B	PC-000010	01	
	SCALE: 1:1	WEIGHT:	SHEET 1 OF 1	